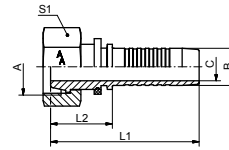




DKL

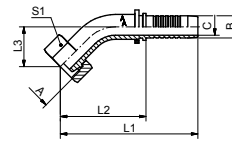


Pressnippel DKL, Dichtkegel mit 24° Konus, leichte Reihe, Dichtkopf metrisch

Pressnipple DKL, sealing cone 24°, sealing head thread metric, light duty series

DN	Rohr	A	B / mm	C / mm	L1 / mm	L2 / mm	S1	Art.Nr.
6	6	M12x1,5	6.7	3.9	49.5	19.5	14	4150DN06M12
6	8	M14x1,5	6.7	3.9	55.0	25.0	17	4150DN06
6	10	M16x1,5	6.7	3.9	56.0	26.0	19	4150DN06M16
8	8	M14x1,5	8.0	5.4	49.8	19.8	17	4150DN08M14
8	10	M16x1,5	8.0	5.4	56.0	26.0	19	4150DN08
10	10	M16x1,5	9.6	6.5	53.3	22.0	19	4150DN10M16
10	12	M18x1,5	9.6	6.5	60.0	26.7	22	4150DN10
12	12	M18x1,5	12.8	9.5	58.0	22.7	22	4150DN12M18
12	15	M22x1,5	12.8	9.5	62.0	26.7	27	4150DN12
16	18	M26x1,5	16.0	12.6	67.5	29.2	32	4150DN16
20	22	M30x2	19.1	14.8	78.7	32.9	36	4150DN20
25	28	M36x2	25.9	20.0	89.7	34.7	41	4150DN25
32	35	M45x2	32.5	26.0	100.7	40.9	50	4150DN32
40	42	M52x2	38.9	31.0	98.5	31.0	60	4150DN40

DKL 45°

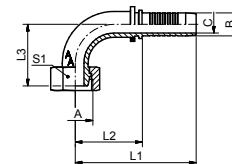


Pressnippel DKL 45°, Dichtkegel mit 24° Konus, leichte Reihe, Dichtkopf metrisch

Pressnipple DKL 45°, sealing cone 24°, sealing head thread metric, light duty series

DN	Rohr	A	B / mm	C / mm	L1 / mm	L2 / mm	L3 / mm	S1	Art.Nr.
8	10	M16x1,5	8.0	5.4	68.0	38.0	12,0	19	4151DN08
10	12	M18x1,5	9.6	6.5	72.2	38.9	17,0	22	4151DN10
12	15	M22x1,5	12.8	9.5	80.0	44.7	18,0	27	4151DN12
16	18	M26x1,5	16.0	12.6	109.5	71.0	27,5	32	4151DN16
20	22	M30x2	19.1	14.8	114.5	68.7	26,0	36	4151DN20

DKL 90°



Pressnippel DKL 90°, Dichtkegel mit 24° Konus, leichte Reihe, Dichtkopf metrisch

Pressnipple DKL 90°, sealing cone 24°, sealing head thread metric, light duty series

DN	Rohr	A	B / mm	C / mm	L1 / mm	L2 / mm	L3 / mm	S1	Art.Nr.
6	6	M12x1,5	6.7	3.9	60.0	30.0	37.0	14	4152DN06M12
6	8	M14x1,5	6.7	3.9	59.0	29.0	29.0	17	4152DN06
8	8	M14x1,5	8.0	5.4	59.4	29.4	37.0	17	4152DN08M14
8	10	M16x1,5	8.0	5.4	58.5	28.5	31.0	19	4152DN08
10	12	M18x1,5	9.6	6.5	70.4	37.1	34.0	22	4152DN10
12	15	M22x1,5	12.8	9.5	75.0	39.7	41.5	27	4152DN12
16	18	M26x1,5	16.0	12.6	84.0	45.5	49.0	32	4152DN16
20	22	M30x2	19.1	14.8	103.0	57.2	55.0	36	4152DN20