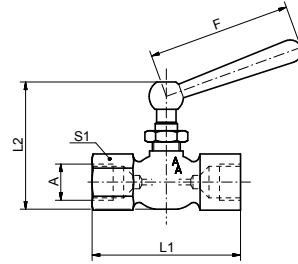


Fig. 12

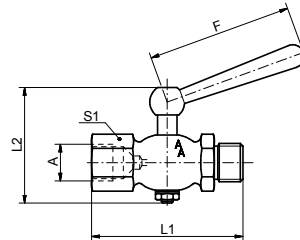


Manometer-Stopfbuchshahn, leichte Ausführung, Muffe x Muffe, Material: Messing

Manometer gauge cock, with stuffing box, light design, female thread x female thread, material: brass

Figur	A	PN / bar	°C	L1 / mm	L2 / mm	F / mm	S1	Art.Nr.
Fig. 12	G1/2	10	80	61	65	50	27	10012041

Fig. 14

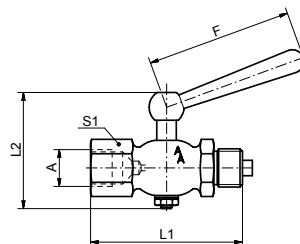
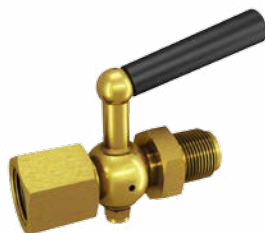


Manometer-Absperrhahn, leichte Ausführung, Muffe x Zapfen, Material: Messing

Manometer gauge cock, light design, female thread x male thread, material: brass

Figur	A	PN / bar	°C	L1 / mm	L2 / mm	F / mm	S1	Art.Nr.
Fig. 14	G1/4	6	50	43	39	28	17	10014021
Fig. 14	G3/8	6	50	46	43	28	22	10014031
Fig. 14	G1/2	6	50	60	43	62	24	10014041

Fig. 15



Manometer-Absperrhahn, DIN 16261 B, Muffe x Zapfen, Material: Messing, 1.4571

Manometer gauge cock, DIN 16261 B, female thread x male thread, material: brass, 1.4571

Figur	A	DIN	PN / bar	°C	L1 / mm	L2 / mm	F / mm	S1	Material	Art.Nr.
Fig. 15	G1/4	DIN 16261 B	16	50	61	43	62	22	Messing	10015021
Fig. 15	G3/8	DIN 16261 B	16	50	54	43	62	22	Messing	10015031
Fig. 15	G1/2	DIN 16261 B	25	50	78.5	62	62	27	Messing	10015041
Fig. 15	G1/4	DIN 16261 B	6	50	61	54	36	22	1.4571	10015023
Fig. 15	G1/2	DIN 16261 B	16	50	80	67	60	27	1.4571	10015043