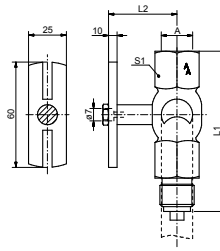


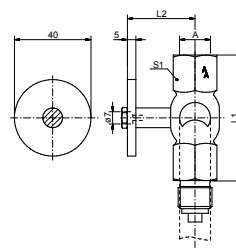
**Fig. 31**



Manometer-Absperrhahn, Muffe x Zapfen x Prüfflansch 60 x 25 mm, Material: Messing  
 Manometer gauge cock, female thread x male thread x test flange 60 x 25 mm, material: brass

Figur	A	Flansch / mm	PN / bar	°C	L1 / mm	L2 / mm	S1	Art.Nr.
Fig. 31	G3/8	60x25	25	50	74	38	27	10031031S
Fig. 31	G1/2	60x25	25	50	78.5	38	27	10031041

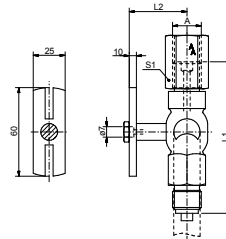
**Fig. 31/A**



Manometer-Absperrhahn, Muffe x Zapfen x Prüfflansch 40 x 5 mm, Material: Messing  
 Manometer gauge cock, female thread x male thread x test flange 40 x 5 mm, material: brass

Figur	A	Flansch / mm	PN / bar	°C	L1 / mm	L2 / mm	S1	Art.Nr.
Fig. 31/A	G1/4	40x5	6	50	58	36	27	10031A021S
Fig. 31/A	G3/8	40x5	25	50	58	36	27	10031A031S
Fig. 31/A	G1/2	40x5	25	50	58	36	27	10031A041S

**Fig. 34**



Manometer-Absperrhahn, DIN 16263, Spannmuffe x Zapfen x Prüfflansch 60 x 25 mm, Material: Messing, 1.4571  
 Manometer gauge cock, DIN 16263, sleeve x male thread x test flange 60 x 25 mm, material: brass, 1.4571

Figur	A	Flansch / mm	DIN	PN / bar	°C	L1 / mm	L2 / mm	S1	Material	Art.Nr.
Fig. 34	G1/2	60x25	DIN 16263	25	50	80	36	27	Messing	10034041S
Fig. 34	G1/2	60x25	DIN 16263	16	50	80	55	27	1.4571	10034043S