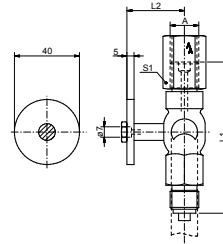
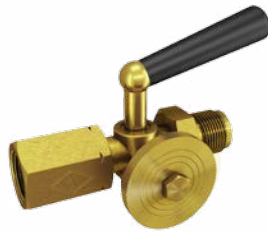




Fig. 34/A

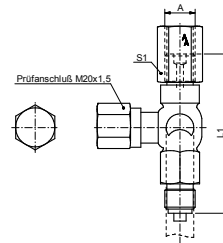


Manometer-Absperrhahn, DIN 16263, Spannmuffe x Zapfen x Prüfflansch 40 x 5 mm, Material: Messing, 1.4571

Manometer gauge cock, DIN 16263, sleeve x male thread x test flange 40 x 5 mm, material: brass, 1.4571

Figur	A	Flansch / mm	DIN	PN / bar	°C	L1 / mm	L2 / mm	S1	Material	Art.Nr.
Fig. 34/A	G1/2	40x5	DIN 16263	25	50	80	36	27	Messing	10034A041S
Fig. 34/A	G1/2	40x5	DIN 16263	16	50	80	43	27	1.4571	10034A043

Fig. 35

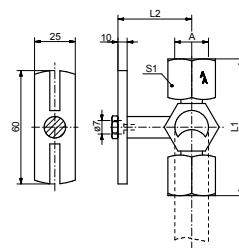


Manometer-Absperrhahn, DIN 16263, Spannmuffe x Zapfen x Prüfzapfen M20 x 1,5, Material: Messing, 1.4571

Manometer gauge cock, DIN 16263, sleeve x male thread x test connector M20 x 1,5, material: brass, 1.4571

Figur	A	Prüfzapfen	DIN	PN / bar	°C	L1 / mm	S1	Material	Art.Nr.
Fig. 35	G1/2	M20x1,5	DIN 16263	25	50	80	27	Messing	10035041
Fig. 35	G1/2	M20x1,5	DIN 16263	16	50	80	27	1.4571	10035043

Fig. 50



Manometer-Stopfbuchshahn, Muffe x Muffe x Prüfflansch 60 x 25 mm, Material: Messing

Manometer gauge cock with stuffing box, female thread x female thread x test flange 60 x 25 mm, material: brass

Figur	A	Flansch / mm	PN / bar	°C	L1 / mm	L2 / mm	S1	Art.Nr.
Fig. 50	G1/2	60x25	25	50	70	40	24	10050041S