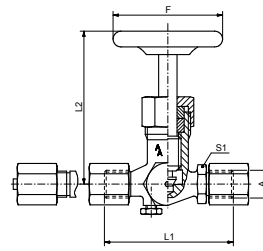




Fig. 70/A

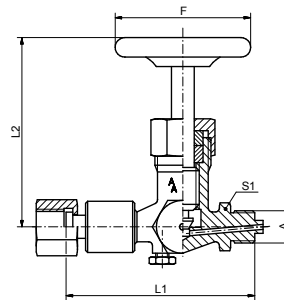


Manometer-Absperrventil, DIN 16271, Spannmuffe x Manometeranschlussmuffe mit Steg x Prüfzapfen M20 x 1,5

Manometer gauge valve, DIN 16271, sleeve x sleeve x test connector M20 x 1,5

Figur	A	DIN	PN / bar	°C	L1 / mm	L2 / mm	F / mm	S1	Material	Art.Nr.
Fig. 70/A	G1/2	DIN 16271 A	250	120	100	100	63	27	Messing	10070A041
Fig. 70/A	G1/2	DIN 16271 A	400	120	100	94	63	27	1.0460	10070A042
Fig. 70/A	G1/2	DIN 16271 A	400	200	100	94	63	27	1.4571	10070A043

Fig. 70/B

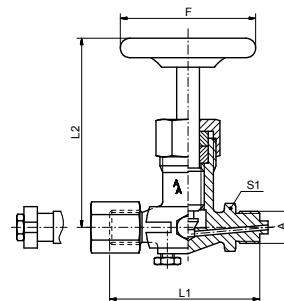


Manometer-Absperrventil, DIN 16271, Zapfen x Schaft für Messgerätehalter mit loser Mutter x Prüfzapfen M20 x 1,5

Manometer gauge valve, DIN 16271, male thread x adapter for instrument holder with nut adjustable x test connector M20 x 1,5

Figur	A	DIN	PN / bar	°C	L1 / mm	L2 / mm	F / mm	S1	Material	Art.Nr.
Fig. 70/B	G1/2	DIN 16271 B	250	120	125	100	63	27	Messing	10070B041
Fig. 70/B	G1/2	DIN 16271 B	400	120	122	94	63	27	1.0460	10070B042
Fig. 70/B	G1/2	DIN 16271 B	400	200	122	94	63	27	1.4571	10070B043

Fig. 71



Manometer-Absperrventil, DIN 16271, Zapfen x Spannmuffe x Prüfflansch 60 x 25 mm

Manometer gauge valve, DIN 16271, male thread x sleeve x test flange 60 x 25 mm

Figur	A	DIN	PN / bar	°C	L1 / mm	L2 / mm	F / mm	S1	Material	Art.Nr.
Fig. 71	G1/2	DIN 16271	250	120	100	100	63	27	Messing	10071041
Fig. 71	G1/2	DIN 16271	250	120	100	100	63	27	ganz Messing	10071041GM
Fig. 71	G1/2	DIN 16271	400	120	100	94	63	27	1.0460	10071042
Fig. 71	G1/2	DIN 16271	400	200	100	94	63	27	1.4571	10071043